



TERRADYNE

• COUNTRY CLUB •



Renovation Master Plan

Renovation Master Plan

Goals & Objectives

- ✓ Playability – Make the golf course more playable for all level of golfers
- ✓ Maintainability – Build course features with maintenance practices in mind
- ✓ Sustainability – Create a sustainable golf course that reduces water usage and labor requirements for the future

Preliminary Renovation Master Plan Concepts

- ✓ Course Character – Keep Scottish / Prairie Links style golf course
- ✓ Greens – Preserve existing greens when possible
- ✓ Tees – Establish five tees with proper course distance
- ✓ Sand Bunkers – Create variety with different bunker styles
- ✓ Infrastructure – Improve cart paths, drainage & irrigation system
- ✓ Hole-by-Hole Improvements



Course Character

- ✓ Define the course character and how it should play
- ✓ Create large landing areas with one height of cut between native grass
- ✓ Transition from cool season grasses to warm season grasses
- ✓ Connect landing areas together
- ✓ Address routing deficiencies

Greens

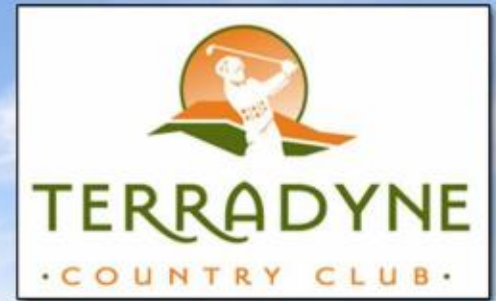
- ✓ Keep as many of the existing greens as possible
- ✓ Build a larger practice green
- ✓ Surrounds – Soften the slopes around the greens and create more containment areas
- ✓ Native Grasses – Remove some of the native grasses adjacent to the greens for playability

Tees

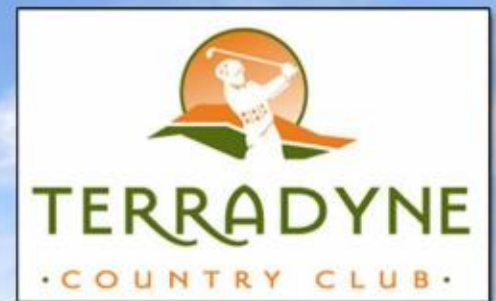
- ✓ Enlarge and level tee surfaces with five tees per hole
- ✓ Large irregular shape tees with Zoysiagrass surfaces & surrounds
- ✓ Establish Buffalo or Brome grass that is not irrigated around the tees
- ✓ Proper yardages for all levels of play



HOLE #16 TEE
EXISTING



HOLE #16 TEE PROPOSED



Existing Scorecard

HOLE	1	2	3	4	5	6	7	8	9	OUT	10	11	12	13	14	15	16	17	18	IN	TOTAL
PAR	3	5	3	4	4	4	4	3	5	35	4	5	3	4	4	3	4	5	4	36	71
Blue	178	594	207	407	368	357	374	198	556	3239	465	585	183	380	444	193	410	525	430	3615	6854
Terradyne	175	534	181	383	368	357	374	150	513	3035	435	547	161	380	418	150	410	486	430	3417	6452
White	175	534	181	383	321	325	352	150	513	2934	435	547	161	353	418	150	388	486	341	3279	6213
Gold	136	514	161	336	260	290	327	124	459	2607	397	526	147	328	379	130	368	463	307	3045	5652
Red	115	477	138	267	247	268	310	113	452	2387	327	409	116	315	356	127	320	428	300	2698	5085

Proposed Scorecard

HOLE	1	2	3	4	5	6	7	8	9	OUT	10	11	12	13	14	15	16	17	18	IN	TOTAL
PAR	3	5	3	4	4	4	4	3	5	35	4	5	3	4	4	3	4	5	4	36	71
Black	176	560	195	365	362	348	360	189	571	3126	447	574	181	367	413	187	398	513	418	3498	6624
Blue	168	518	169	327	334	331	335	156	522	2860	412	531	153	338	384	163	362	478	396	3217	6077
White	161	474	153	280	305	307	304	144	473	2601	380	489	142	309	349	142	327	446	349	2933	5534
Gold	139	434	137	243	274	278	256	114	422	2297	347	445	125	281	317	118	298	420	309	2660	4957
Red	105	398	93	191	245	251	233	90	377	1983	309	401	107	252	283	96	268	357	280	2353	4336

Sand Bunkers

- ✓ Position bunkers in proper locations that fit with today's game and course character
- ✓ Explore a variety of architectural style for bunkers: Revetted Bunkers, Prairie Bunkers & Zoysia Face Bunkers
- ✓ Bunker Examples

Prairie Bunker



Prairie Bunker



Prairie Bunker



Revetted Bunker



Revetted Bunker



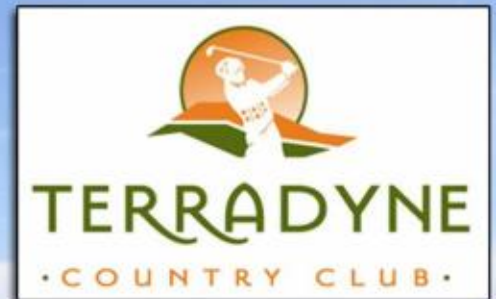
Zoysiagrass Face Bunker



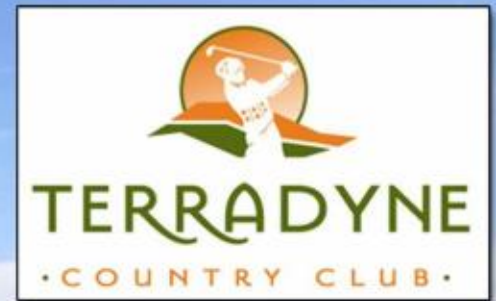
Zoysiagrass Face Bunker



HOLE #16 GREEN EXISTING



HOLE #16 GREEN PROPOSED



Infrastructure

- ✓ Replace all asphalt cart paths with new concrete paths and curbing
- ✓ Expand irrigation lake to maximize storage capacity
- ✓ Plan for a new irrigation system that works with warm season grasses















Irrigation Lake



Preliminary Irrigation Lake Study

Usuable Storage

	Area	Draw Down	Total Storage	Storage in Gallons	Gallons Per Inch
New Lake	160,000 sq. ft.	8 ft.	1,080,000 cu. ft.	8,078,400	84,150
Total Storage			1,080,000 cu. ft.	8,078,400	

Replenishment

	Watershed Area	Rainfall	Volume per Inch of Rain	Volume in Gallons	Gallons at 75% Capture
Watershed	150 acres	1 in.	544,500 cu. ft.	4,072,860	3,054,645

* Approximately 2.65 Inches of rain would be required to completely replenish new irrigation lake assuming 75% capture.

Typical Usage

325,000 Gallons per Day (peak usage)

8,078,400 Gallons of Storage

24.86 Days of Water Storage (with no rainfall)

3.86 Inches of Draw Down per Day

New Putting Green & Staging Area



A photograph of a golf course under a clear blue sky. In the foreground, a green fairway stretches across the frame. To the right, a yellow flag is planted in the grass. In the background, a large crowd of spectators is gathered on a grassy slope, watching the game. Trees line the edges of the course, and a small structure is visible in the distance.

Hole-by-Hole Improvements

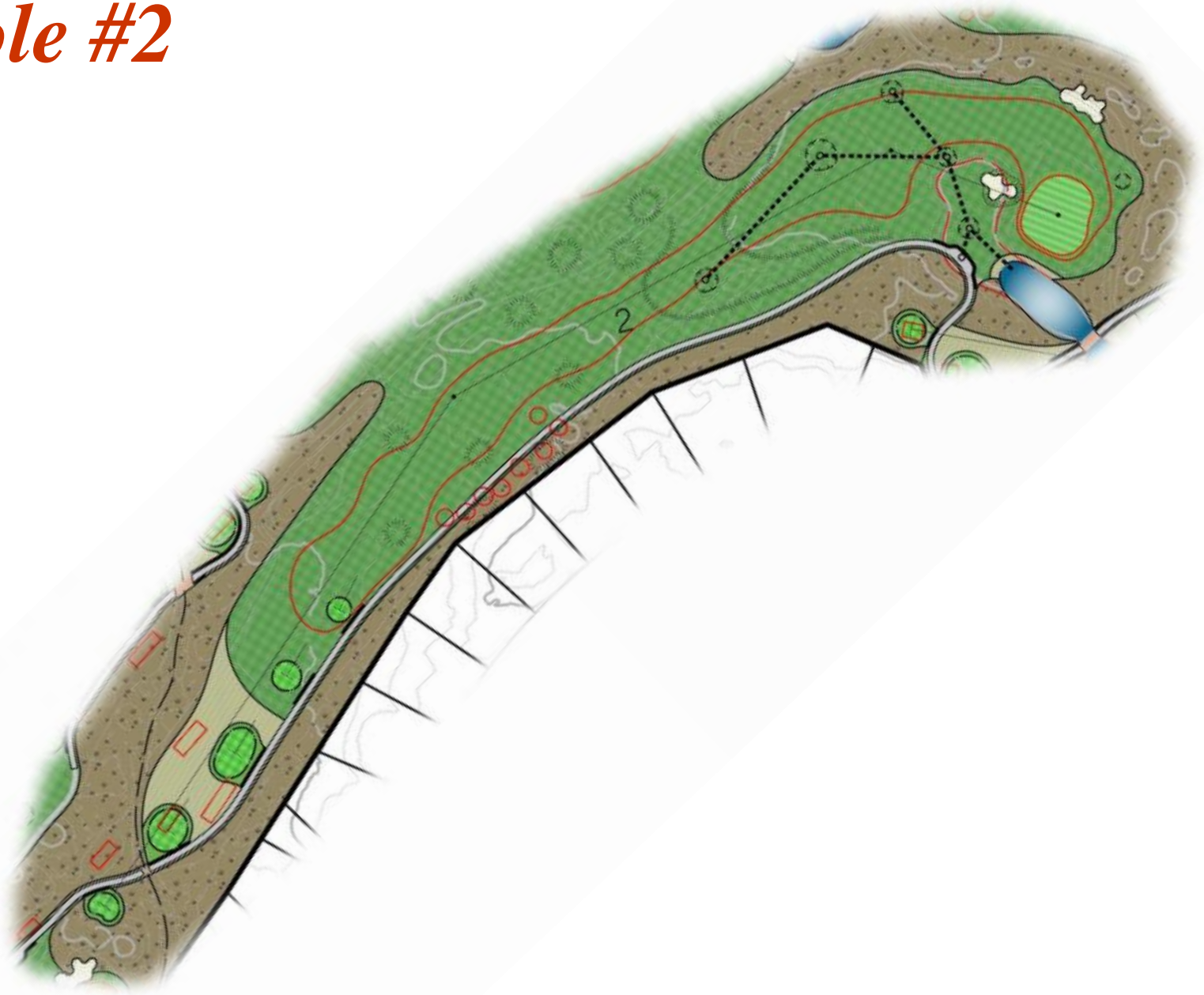
Hole #1







Hole #2







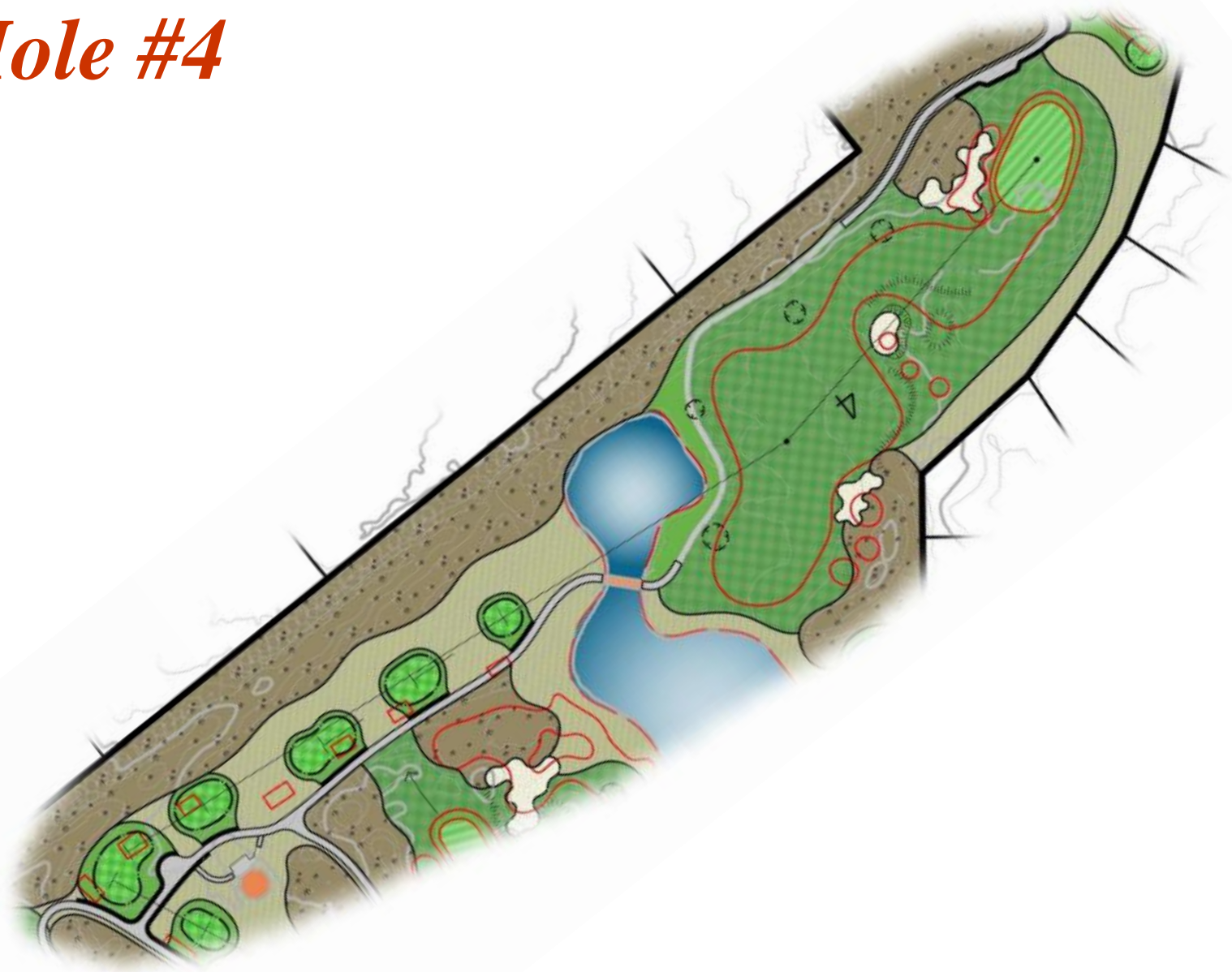


Hole #3





Hole #4

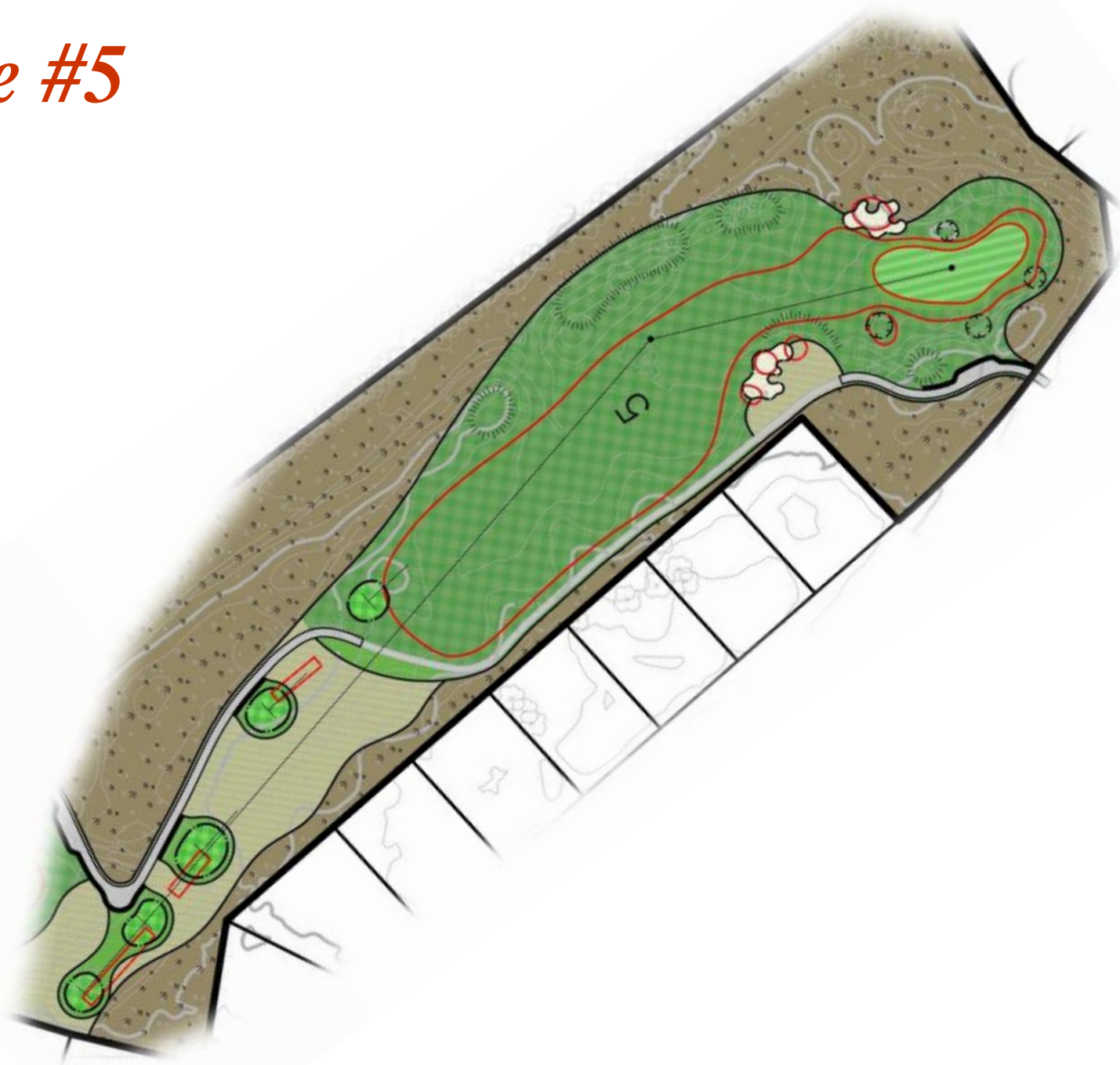








Hole #5









Hole #6







Hole #7

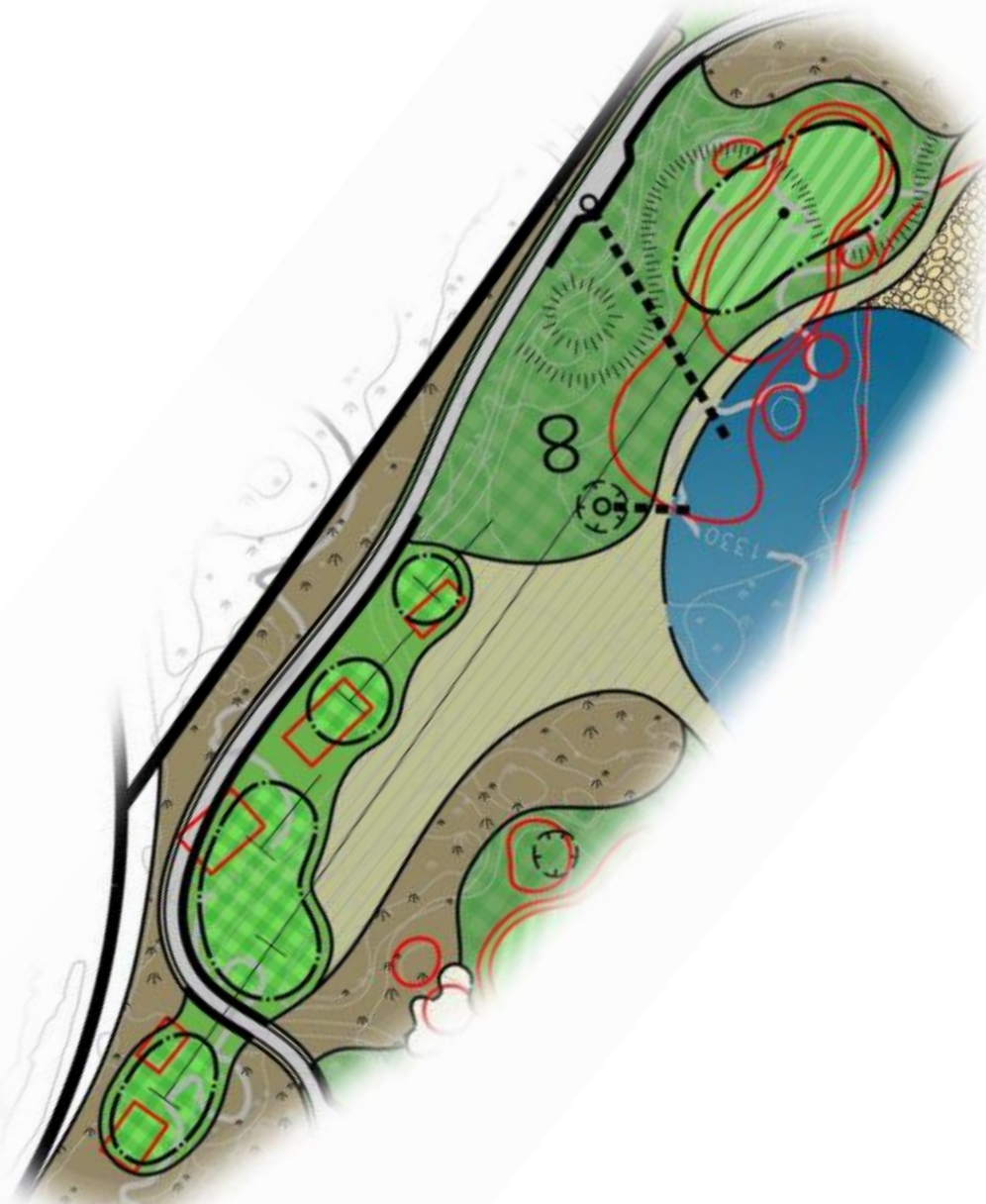








Hole #8





Hole #9









Hole #10









Hole #11









Hole #12







Hole #13









Hole #14









Hole #15







Hole #16









Hole #17









Hole #18









Questions & Answers

